



Report No. : M61-240801370EN



SUPER LABORATORY CO., LTD.

TESTING CENTER TEST REPORT

CUSTOMER

ASIA HEALTHCARE INC., TAIWAN BRANCH (BVI)

7F-3, No. 360, Sec. 1, Fuxing S. Rd., Da'an Dist., Taipei City 106094, Taiwan (R.O.C.)

Page 1 of 2

Sample name : BioCover Antimicrobial Disposable Medical Curtains

Manufacturer : ELIM MEDICAL TECHNOLOGY (SUZHOU) CO.,LTD.

Manufacture date : 2022.3.1

Sample expiry date : -

Lot number : -

Country of origin : China

Sample condition : Room temperature

Test sample packaging : As appendix

Sample delivering : By applicant

Number of samples : 1 Piece

Contact person : Ching-Chuen (Charles) Chen

Report purpose : For export

Phone number : (02)27002683#39

----- The sample information provided above was confirmed by the customer -----

Sample Received : 2024/08/23

Date of Testing : 2024/09/09

Date of Report : 2024/10/01

Item	Result	Unit	Method	LOQ / LOD
Antimicrobial activity : <i>Clostridium difficile</i>	>99.82	%	Refer to AATCC TM100-2019, Test Method for Antibacterial Finishes on Textile Materials: Assessment of.	-

----- Null below -----

Remarks :

- All inspection contents in this inspection report are inspected according to the entrusted items. If there is any falsehood, we are willing to take full responsibility.
- Antimicrobial Activity: Please see the test appendix for detailed inspection results.
- Unsealed sample.
- Please note if the tests do not involve sampling, then the test report is only responsible for the test sample provided by the customer. And the report is invalid if not presented in full and for reference only; it shall not be used for advertising, sales promotions, or notarial purposes. Also, when the target is below the limit of detection (LOD) or the limit of quantification (LOQ), the test results will be expressed as "Negative" or "ND" (Not detected).



This report is used only for providing the testing results of commissioned items, not for determining the legality of the product.



Yueh-ting Tsai, Ph. D.
Approval Signatory



Report No. : M61-240801370EN



SUPER LABORATORY CO., LTD. TESTING CENTER TEST REPORT

CUSTOMER

ASIA HEALTHCARE INC., TAIWAN BRANCH (BVI)

7F-3, No. 360, Sec. 1, Fuxing S. Rd., Da'an Dist., Taipei City 106094, Taiwan (R.O.C.)

Page 2 of 2

Sample name : BioCover Antimicrobial Disposable Medical Curtains

Sample condition : Room temperature

Sample Received : 2024/08/23

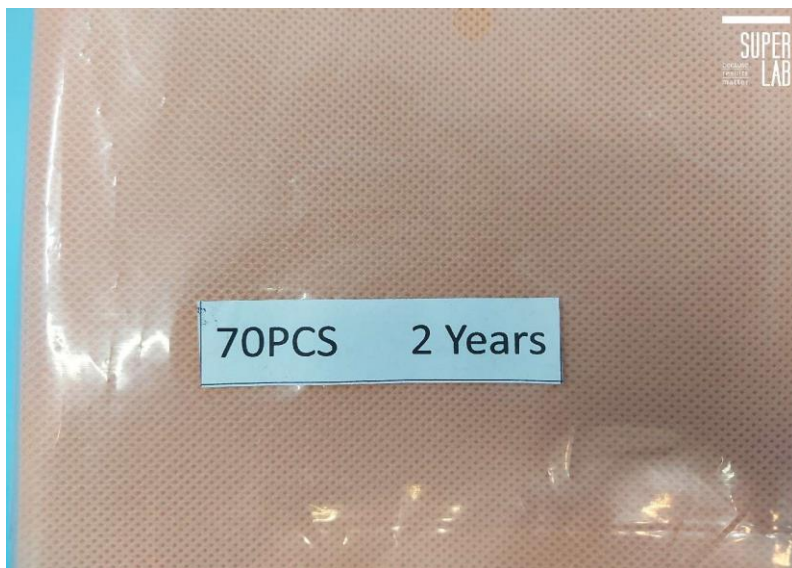
Date of Testing : 2024/09/09

Date of Report : 2024/10/01

M61-240801370EN



M61-240801370EN



Yueh-ting Tsai

Yueh-ting Tsai, Ph. D.
Approval Signatory

Appendix

1. Specimens I.D. : M61-240801370

2. Test method :

2.1 Test strains and culture condition :

Test strains	Test condition	Culture condition
<i>Clostridium difficile</i>	37 ± 2°C	37 ± 2°C
ATCC 9689	24 hr	48 ± 2 hr

2.2 Reference :

2.2.1 Refer to AATCC TM100-2019, Test Method for Antibacterial Finishes on Textile Materials.

2.3 Grouping :

2.3.1 Immediately flush the control group (C0).(Customer not provided.)

2.3.2 Immediately flush the test group (T0).

2.3.3 Flush the control group after culture (Ct).(Customer not provided.)

2.3.4 Flush the test group after culture (Tt).

2.4 Prepare the suspension of test microbe, and the concentration is around $1.0 \times 10^5 \sim 3.0 \times 10^5$ CFU/mL.

2.5 Add 1 mL of microbial suspension into 1 g test and control group.

2.6 After the test group and the control group were inoculated with microbial solution, they were executed according to the conditions of 2.1.

2.7 Flush the test and control group immediately with 100 mL SCDLP broth.

2.8 The test group and control group were conducted for 10-fold serial dilution with 9 mL sterile saline.

2.9 After serial dilution, each group was inoculated on appropriate medium. The medium was cultured under the culture condition. The growth was observed and colony counts were recorded.

2.10 Calculation :

No customer provided a control sample with the same fiber type or structure as the sample and without antibacterial ingredients.

$$\text{Reduction rate (R)} = (T_0 - T_t) \div T_0 \times 100 \%$$

T₀ : The number of microbe immediately flush the test group.

T_t : The number of microbe flush the test group after culture.

Only when the customer does not provide a control group, a white cloth conforming to JIS L0803 without antibacterial ingredients is used as the control group. The test results are only used for quality control, and the antimicrobial rate is not calculated.

Appendix

3. Result :



Figure 1: Test article.

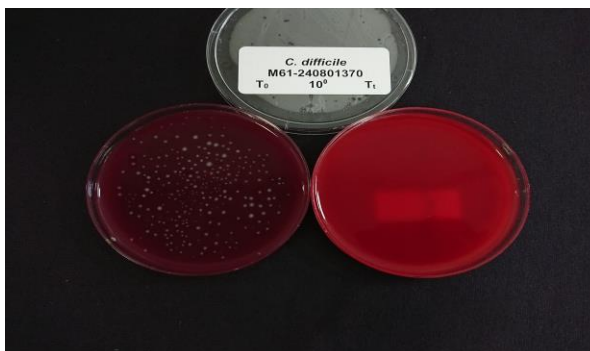


Figure 2: Result of control and test group.

Strains : *Clostridium difficile*

Table 1 : Result of test article against test strain.

Test strains	Final inoculated concentration (CFU/g)	Immediately flushCFU/mL		Flush after culture CFU/mL		Reduction rate(%) ¹
		Control (C0)	Test (T0)	Control (Ct)	Test (Tt)	
<i>Clostridium difficile</i>	2.6×10^5	2.7×10^3	2.8×10^3	2.0×10^4	<5	>99.82

1. Reduction rate (R) : If antimicrobial rate < 0.00 % presented with 0.00 %.

Table 2 : Conditions for the establishment of the test.

Condition ¹		Calculation result	Result
The specimen unoculated bacterial solution should immediately wash away the residual bacterial volume and grow without colonies.	<i>Clostridium difficile</i>	-	Pass
The number of bacteria washed out after culture in the control group (Ct) was greater than the number of bacteria washed out immediately in the control group (Co), and the increase in the number of bacteria was ≥ 1 Log.	<i>Clostridium difficile</i>	Log Ct - Log Co = 4.30 - 3.43 = 0.87 < 1	-

1. Conditions for the establishment : All of them should be Pass when the test condition is more 24 hours.